

Tomato Diseases

Bacterial Diseases



Bacterial canker
(*Corynebacterium michiganense* pv. *michiganense*)



Bacterial canker
(*Corynebacterium michiganense* pv. *michiganense*)



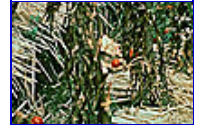
Bacterial speck
(*Pseudomonas syringae* pv. *tomato*)



Bacterial speck
(*Pseudomonas syringae* pv. *tomato*)



Bacterial wilt
(*Ralstonia solanacearum*)



Bacterial wilt
(*Ralstonia solanacearum*)



Bacterial spot
(*Xanthomonas vesicatoria*)



Bacterial spot
(*Xanthomonas vesicatoria*)

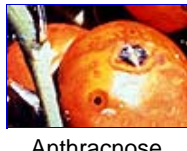
Fungal Diseases



Early blight
(*Alternaria solani*/ *A. porri*)



Early blight
(*Alternaria solani*/ *A. porri*)



Anthracnose
(*Collectotrichum* spp.)



Anthracnose
(*Collectotrichum* spp.)



Leaf mold
(*Fulvia fulva* Syn. *Cladosporium fulvum*)



Leaf mold
(*Fulvia fulva* Syn. *Cladosporium fulvum*)



Fusarium wilt
(*Fusarium oxysporum* f. *lycopersici*)



Powdery mildew
(*Leveillula taurica*/ *Oidiopsis taurica*)



Late blight
(*Phytophthora infestans*)



Late blight
(*Phytophthora infestans*)



Late blight
(*Phytophthora infestans*)



Buckeye rot
(*Phytophthora* spp.)



Black leaf mold
(*Pseudocercospora fuligena* Syn. *Cercospora fuligena*)



Black leaf mold
(*Pseudocercospora fuligena* Syn. *Cercospora fuligena*)



Southern blight
(*Sclerotium rolfsii*)



Septoria leaf spot
(*Septoria lycopersici*)

Viral Diseases



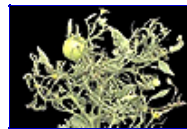
Cucumber Mosaic Virus (CMV)



Cucumber Mosaic Virus (CMV)



Cucumber Mosaic Virus (CMV)



Cucumber Mosaic Virus (CMV)



Potato Virus Y (PVY)



Tomato Leaf Curl Virus (TLCV)



Tomato Leaf Curl Virus (TLCV)



Tomato Mosaic Virus (TMV)



Tomato Spotted Wilt Virus (TSWV)



Tomato Spotted Wilt Virus (TSWV)



Tomato Spotted Wilt Virus (TSWV)

Other



Root-knot nematode
(*Meloidogyne* spp.)



Root-knot nematode
(*Meloidogyne* spp.)
